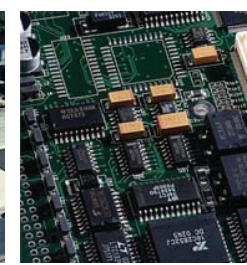
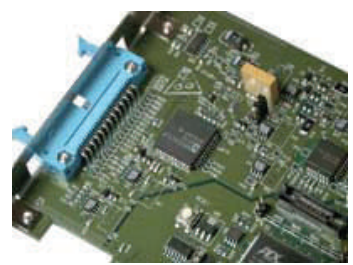


MEC Northwest

*“ Celebrating over 50 years
of innovation ”*



PRODUCT: FIRE DOOR COMPONENTS

Company Locations:
Canby, OR
Milwaukie, WI
Tecate, Mexico

Year Incorporated:
1954

Number of Employees:
92

Company Headquarters:
Milwaukie, WI

MEC NORTHWEST

1140 NW 3rd Ave
Canby, OR 97013
Phone: 503-263-7300
Fax: 503-263-7299
www.meccompanies.com

Contact?

MEC Northwest serves a large number of West Coast original equipment manufacturers whose business models require high service, quick-turn assembly and multi-site resources. Excelling in a high-mix, low-volume environment, MEC Northwest produces circuit boards in volumes ranging from 50 to 2,000 per month.

With 55,000 square feet of manufacturing space, the company has invested in machinery and Lean Manufacturing processes designed to accommodate quick prototype assembly, including top-and bottom-side SMT, BGA and thru-hole assembly. The facility includes a high-speed CP6 Fuji line as well as new Fuji IP3 placement equipment for surface mount applications. Further capital investments included a new ERP system used for production and materials planning, forecasting, inventory control, warehousing and distribution.

MEC Northwest has the experienced staff to project manage design, R&D or assembly serving many industries, including medical, dental, laboratory, audiovisual and theater control.



City of Canby

Economic Development Department